

Stone Arch Bridge, Minneapolis, Minnesota

Best images of 2019

© 2019 Cindi Christie/Cyanpixel Photography
All Rights Reserved
www.cyanpixel.net



Best images of 2019

PHOTOS BY CINDI CHRISTIE



A doe and a few fawns were regular visitors to this apple tree near downtown Salmon. A wild turkey strolls the yard in Livermore.

Welcome to the 13th edition of the annual “Best Images” books. It’s been a busy year — tough to make photography a priority. We completed our move to Salmon, Idaho. This book has some time-saving iPhone photos sprinkled among those made with the Nikon, GoPro and a new Leica.

Here’s to having a camera handy and finding beauty, and unexpected treasures, wherever life takes you in the year ahead.

Cover: Autumn leaves and the Beaverhead Mountains.



The reward for completing a hike along a rugged dry stream bed is a visit to the pre-Hispanic Canipole cave paintings and petroglyphs in Baja California Sur. Most depict creatures found on land and sea. Others are geometric patterns that are up for interpretation.







An oasis is a surprise in the Loreto desert during an ATV ride.



A heart-shaped lake is seen on approach to Missoula International Airport.



A little old man cactus finds a home among boulders in Baja California Sur.



An oak tree hangs onto to the steep slope of Arroyo Seco in Livermore.



Water swirls beneath the Stone Arch Bridge in Minneapolis.



Gnarled cliffside tree roots are exposed to the air in Baja California Sur.









August's wild weather had raindrops plastered to the window following an intense storm, left. Above, clouds tower over the Beaverhead Mountains.

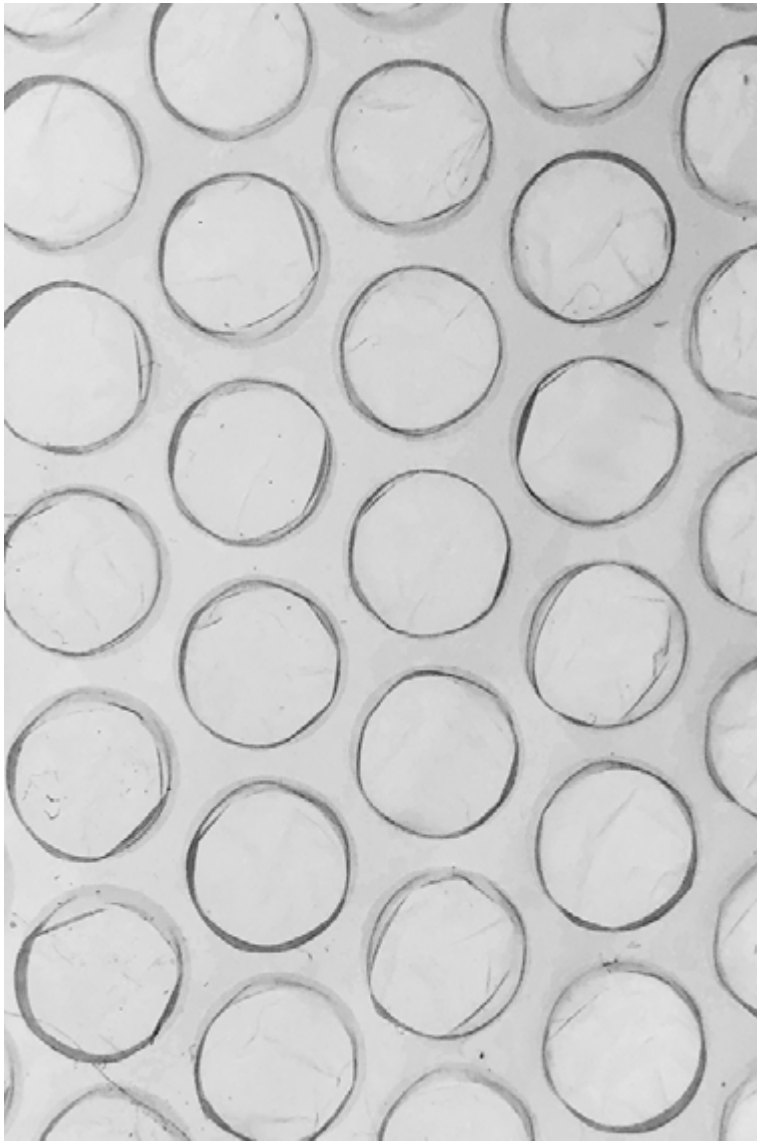


Snow arrived in September, covering the crabapples.

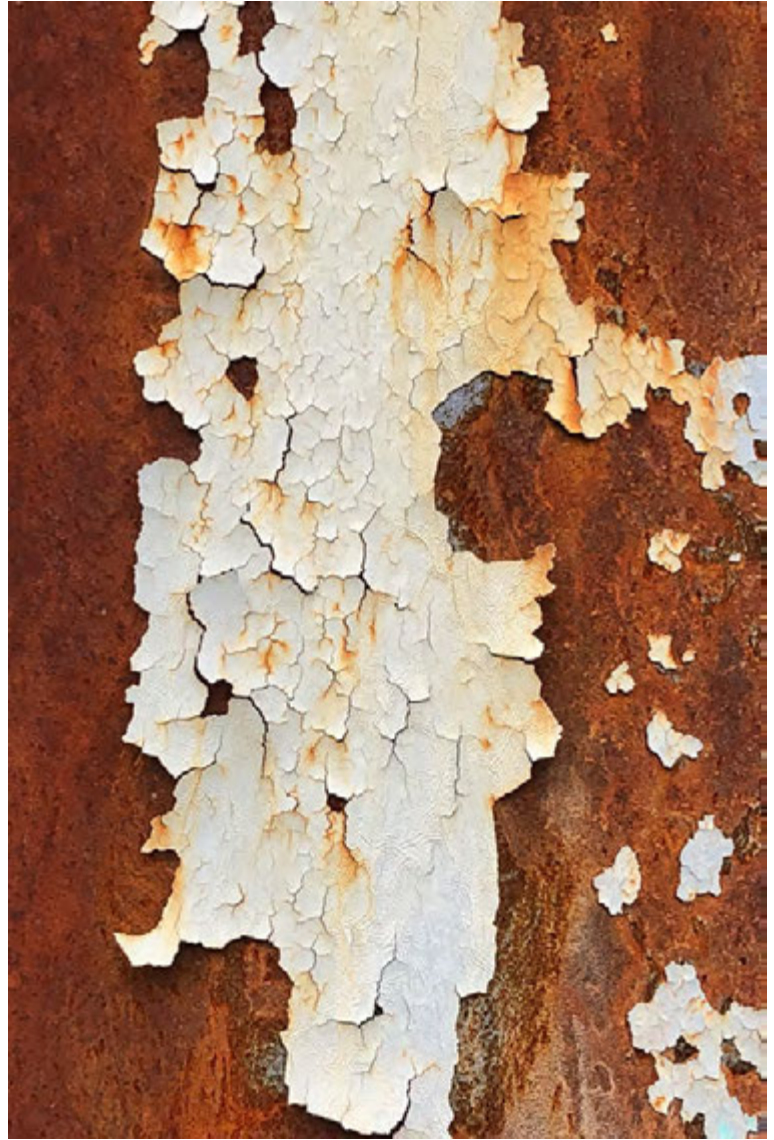
Previous pages: The unpaved Lemhi Pass road takes travelers between Idaho and Montana. Next pages: Tall grass bends to the snow, but does not break.







Bubble wrap, plentiful around the house during packing, and Freyja's curly, wet hair inspire studies in texture.



White squiggles decorate rust on a pedestrian bridge in Salmon, left, and paint peels from a stack at Water Power Park near St. Anthony Falls in Minneapolis.



Pillsbury's
BEST FLOUR



The Pillsbury "A" Mill, once the largest in the world according to the Minneapolis Historical Society, stands near the Mississippi River in Minneapolis. Pillsbury was sold to General Mills and the building converted to artist lofts. The riverfront pays homage to the city's industrial past. Above, barges line the Mississippi River near Holman Field (St. Paul Downtown Airport).