



Best images of 2020

PHOTOS BY CINDI CHRISTIE



Continental Divide marker at Lemhi Pass.

Best images of 2020

© 2020 Cindi Christie/Cyanpixel Photography
All Rights Reserved
www.cyanpixel.net



Welcome to the 14th edition of the annual “Best Images” books. Much of 2020 has been spent hiding out from the vicious coronavirus. Masking went from a Photoshop technique I seldomly use to everyday face apparel. All of the photos were made within Lemhi County, population 7,936. Fortunately, there was no rationing of spectacular scenery or interesting sites to explore while avoiding crowds.

Here’s to having a camera handy and finding beauty, and the unexpected, wherever life takes you in the year ahead. Be healthy.

Cover: The Beaverhead Mountains are seen beyond a large thistle growing in June along Stormy Peak Road in Salmon.

At left: Puppy Gerda helps create the great toilet paper shortage of 2020. Below: Clouds gather above Lemhi Pass on the Continental Divide in July.



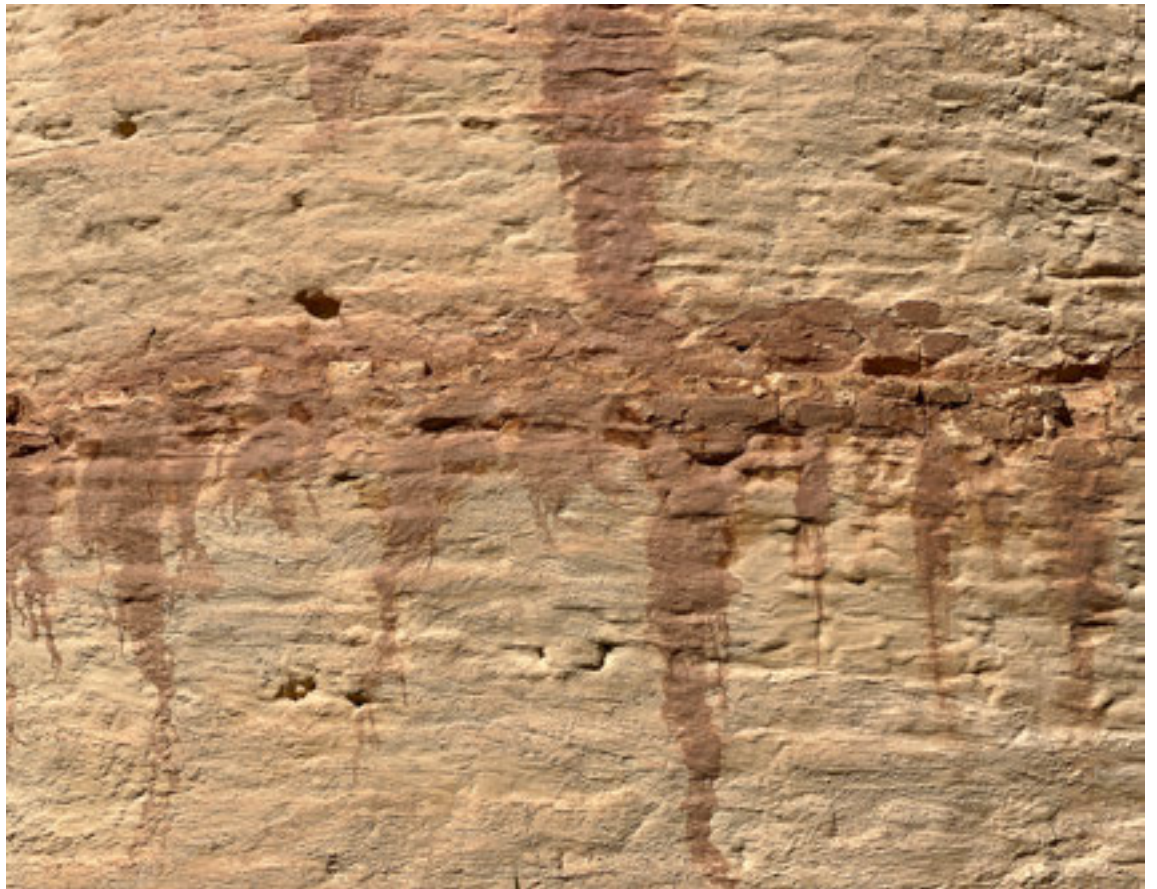


Lego bricks are sorted for building a VW camper van. The River Cinemas is closed for health reasons and lack of new films, disinfecting wipes, soaps and other products are difficult to find.



Comet NEOWISE is visible on July 18 above Salmon, Idaho. Comet C/2020 F3 NEOWISE (NASA's Near-Earth Object Wide-field Infrared Survey Explorer) is not expected to be visible again for thousands of years.





A prairie rose blooms near the remains of what were once 16 charcoal kilns at the Charcoal Kilns Historic Site near Leadore. Four kilns in various states of preservation can be viewed on a self-guided tour after a 5-mile drive on a gravel road. Dark shapes emerge from the kiln walls.

(See next pages for more)



The brick kilns, built in 1886 by Montanan Warren C. King, were used to turn timber into charcoal. The charcoal powered a smelter in Nicholia that processed lead and silver from the Viola Mine. Part of that area, across Birch Creek Valley, is also open to the public. The kilns are now part of the Caribou-Targhee National Forest. At right: A collapsed dome offers a view of the clear blue sky in July and the charred kiln walls.





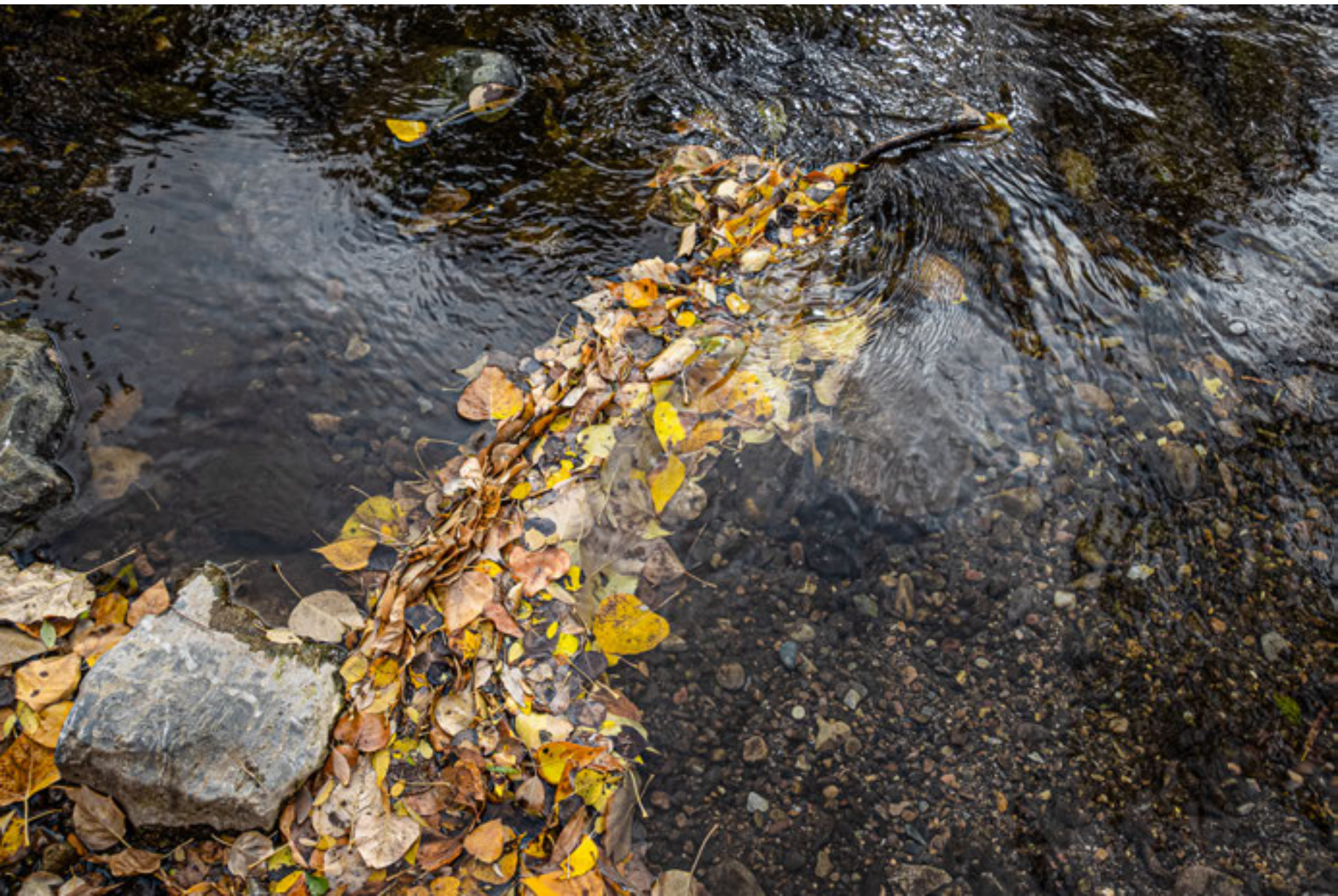


Above: A daylily blooms in the garden. At left: Aspen leaves glow yellow along Williams Creek Road. Below, flame-colored foliage decorates a rustic fence. Following pages: Arrowleaf balsmroot and lupine cover mountainside slopes near Williams Lake.









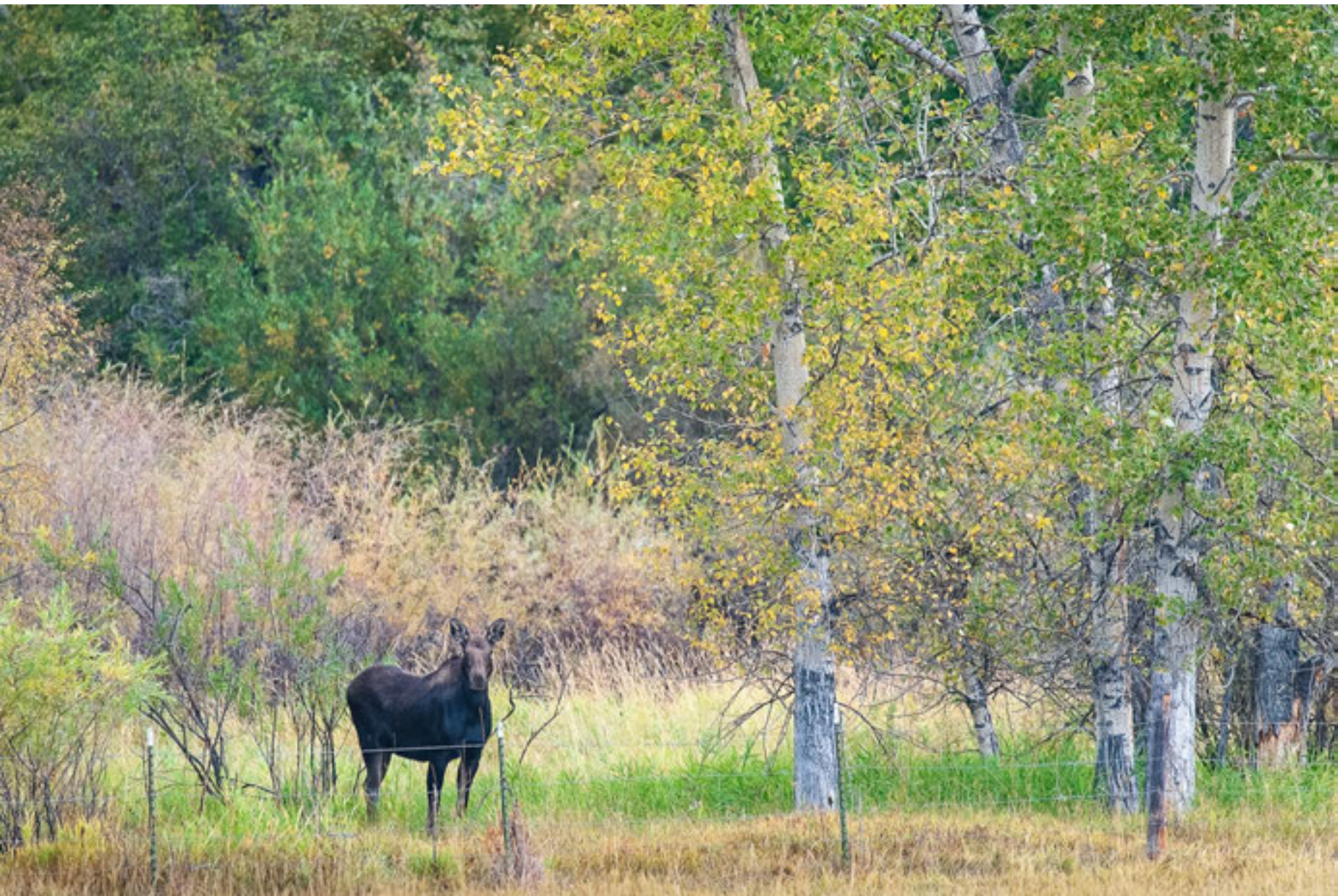
Golden and yellow leaves that landed in Hayden Creek find their progress downstream impeded.



Algae swirl in a small body of water near Hayden Ponds in July. The nearby pond itself is stocked with trout.



Twin white-tailed deer fawns visited the pasture often this year.



Seen less frequently in the yard, a moose did some people-watching in September.



A double rainbow shows its VIBGYOR ROYGBIV colors in June.



Snow coats the Doubletree Ranch beaverslide in late January.





The end of a glulam beam shows multiple patterns in the wood. The beam was used for a new lean-to for the shop Left: The swollen Salmon River flows beneath the Shoup Bridge in June. Below: The rising moon is seen through falling snow in February.

